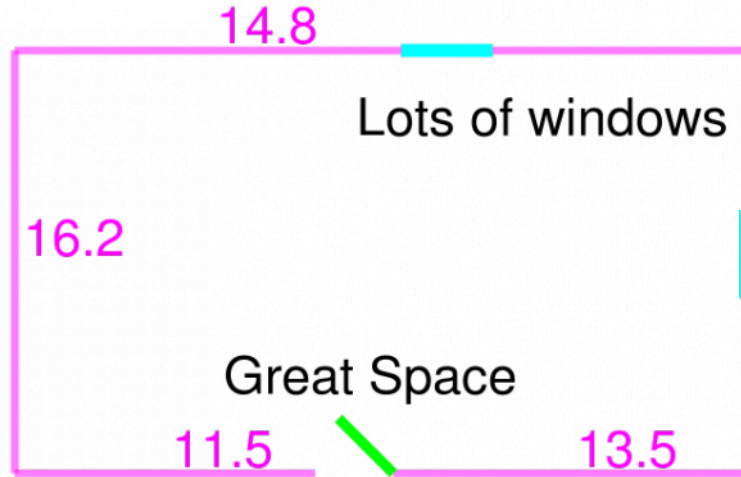




Wonderful Space, Affordable Price

Large Open Space
Suite: Space 1 Rent: \$18/SF/Year Available: Now



Space available was used by software company and has an open floorplan that the Landlord will subdivide for any size tenant. Users with large data needs may find the upgraded fiber in the building attractive.

Orange Grove Commerce Park is an attractive and well-maintained Class B office property with ample parking and good access to Dale Mabry Highway and I-275.

